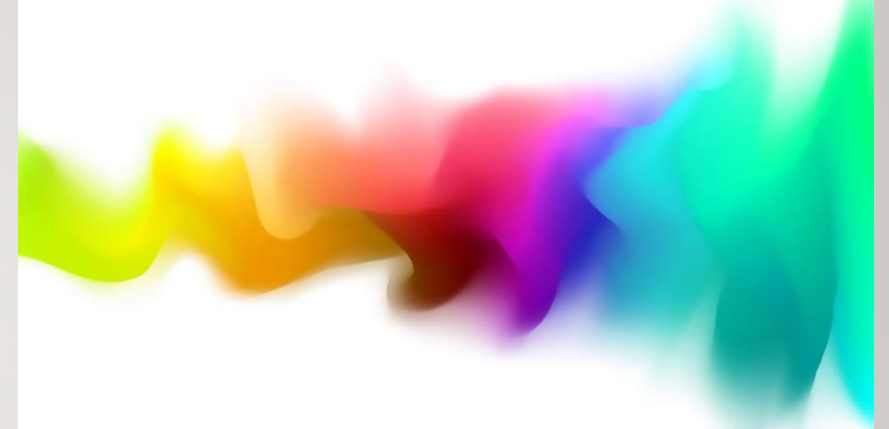


# MN ELECTION ANALYSIS

---

A LOOK INSIDE THE NUMBERS AND A PEEK AT THE PROCESS  
(ANALYTICS PROVIDED BY FORENSICS COMMITTEE OF MNEIS)



# 2020 ELECTION STATS (AS OF 11/29/20):

---

- **807,319** In-person voters
- **1,203,215** Absentee/mail-in voters (from voter history)
  - **1,909,277** Absentee/mail-in reported via SoS
- **135,136** same-day registrations

# 2020 ELECTION STATS CONTINUED...

---

- 741,566 voters new since 2016 in MN
- 10,361 voters whose reg address differs from mailing and their mail address is a PO Box
- 2993 voters over 100 years old
  - 1984 voters over 120 years old
    - 1947 were born in 1900 – likely a typo (needs fixing!!)

# STATE CANVASING BOARD CERTIFIED THE ELECTION ON 11/24/2020

---

1. On 11/29, **38.6% of absentee voters were not recorded in the Voter History:**
  - The governing statute regarding absentee ballots states:
    - “...the county auditor or municipal clerk must immediately record that a voter's absentee ballot has been accepted. After the close of business on the seventh day before the election, a voter whose record indicates that an absentee ballot has been accepted must not be permitted to cast another ballot at that election.”
    - According to MN SoS voter history: **1767 voted in-person and absentee**
2. Only 1 county got their voter histories completed by 11/16: Chippewa County
3. Hennepin, which had over 500,000 absentee ballots, input 96% of theirs by 11/29.
  - How did they get it done so fast... ?!
  - In MN Senate Testimony it was disclosed they started counting 46 days before the election.
4. Eight counties went past the deadline of 12/15

# VOTER HISTORY UPDATE SCHEDULE – POST 11/24

---

	Absentee	Mail-in	Total	Histories Short	% Missing
<b>Nov 29th</b>	1,080,089	93,011	1,173,100	<b>736,177</b>	<b>38.56%</b>
<b>Dec 13th</b>	1,576,796	154,135	1,730,931	<b>178,346</b>	<b>9.34%</b>
<b>Dec 20th</b>	1,633,443	184,899	1,818,342	<b>90,935</b>	<b>4.76%</b>
<b>Dec 27th</b>	1,635,044	185,012	1,820,056	<b>89,221</b>	<b>4.67%</b>
<b>Jan 31st</b>	1,635,427	185,015	1,820,442	<b>88,835</b>	<b>4.65%</b>

# SVRS (STATE VOTER REGISTRATION SYSTEM) QUESTIONS

---

- Why was an election certified with 38.6% of the voter history not updated?
- How many databases are currently being used within SVRS?
  - Voter History, Voter Registration, Absentee Voting
  - Any Others?
- Why so many databases?
  - How are they linked and kept updated?
  - Are they validated and cross-checked?
- Why does it take so long to update Voter History?
- When was the last time the SVRS system was audited and cleaned up? Has it ever been?

# AND OTHER THINGS WE NOTICED...

---

1. We have matched nursing home locations against voter registration data and have seen a high volume of absentee voting coming from those locations.
2. We have found dozens of voters that have voted from illegal locations such as UPS Stores, Hotels, etc.
3. We have identified 1000's of absentee voters who could be the same voter (exactly same name and Year of Birth - YoB), but have different addresses and voterid's.
  - a. Since all we have is YoB, we cannot determine if the person is one in the same or just have the same name and YOB.
  - b. SoS has actual DoB. Are they validating these absentee voters using the same methods as in-person registrants?

# DATA SOURCES & METHODS

---

- Several different data sets from the MN SoS were analyzed. Each data set was loaded into a MySQL database as well as a FilePro database. The initial data analysis was performed using the FilePro database and crosscheck validated using the MySQL database.
  1. MN SoS voter History data from 02/23/20, 11/29/20, 12/13/20, 12/20/20, 12/27/20, 01/31/21
  2. MN SoS voter registration data from same dates as above
  3. Absentee ballot tracking data from 10/27/20 – 11/05/20